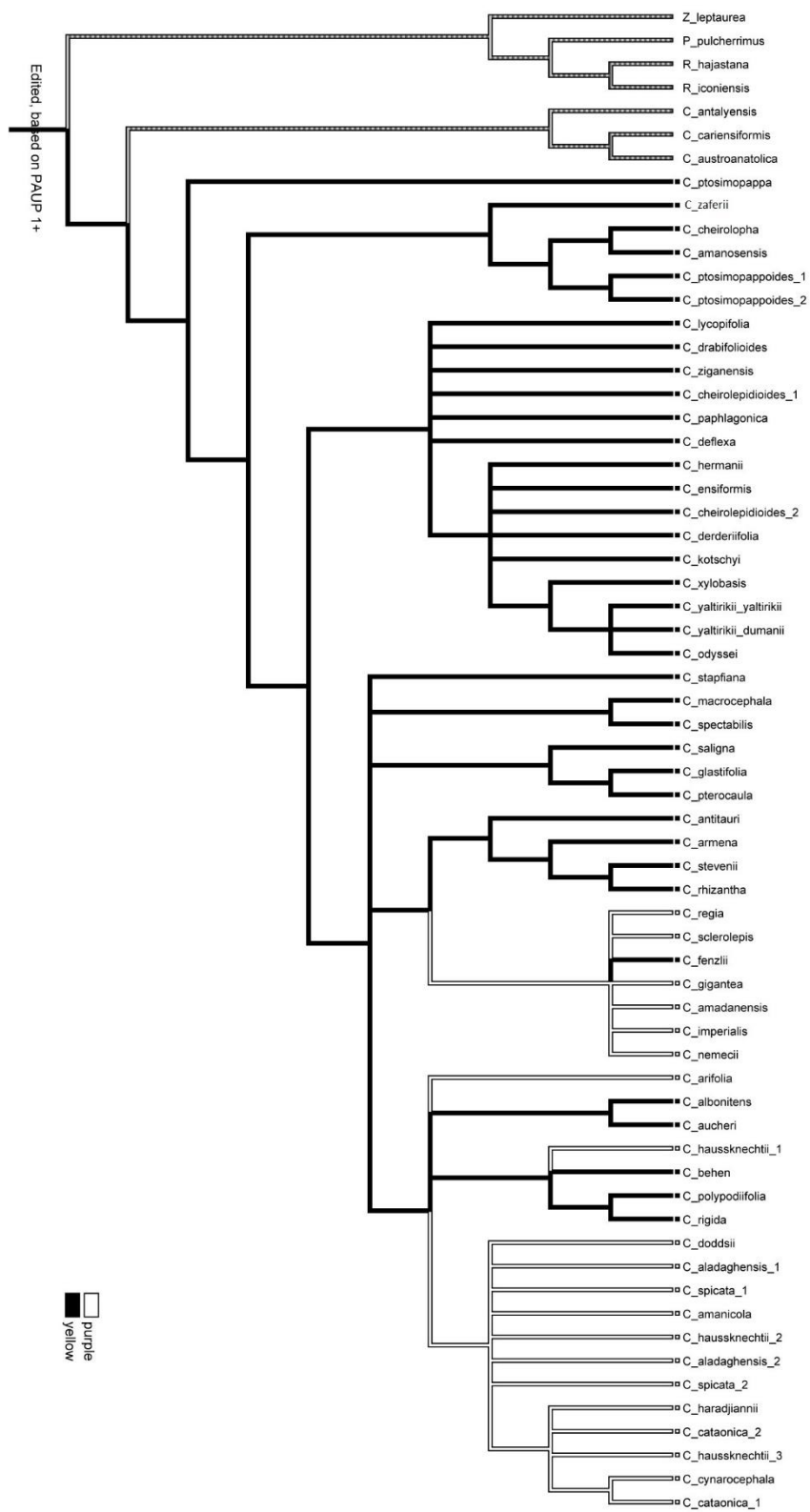
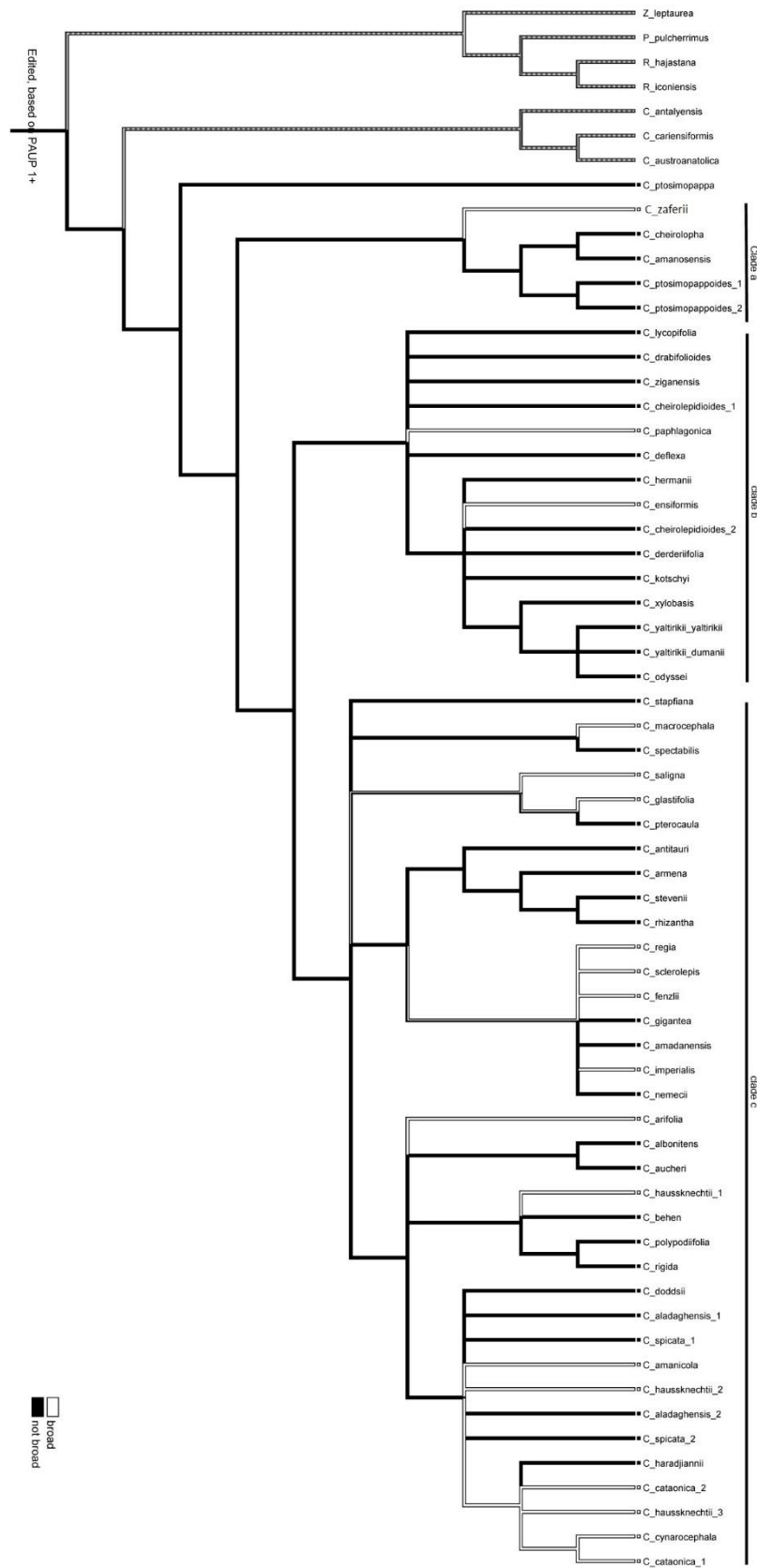


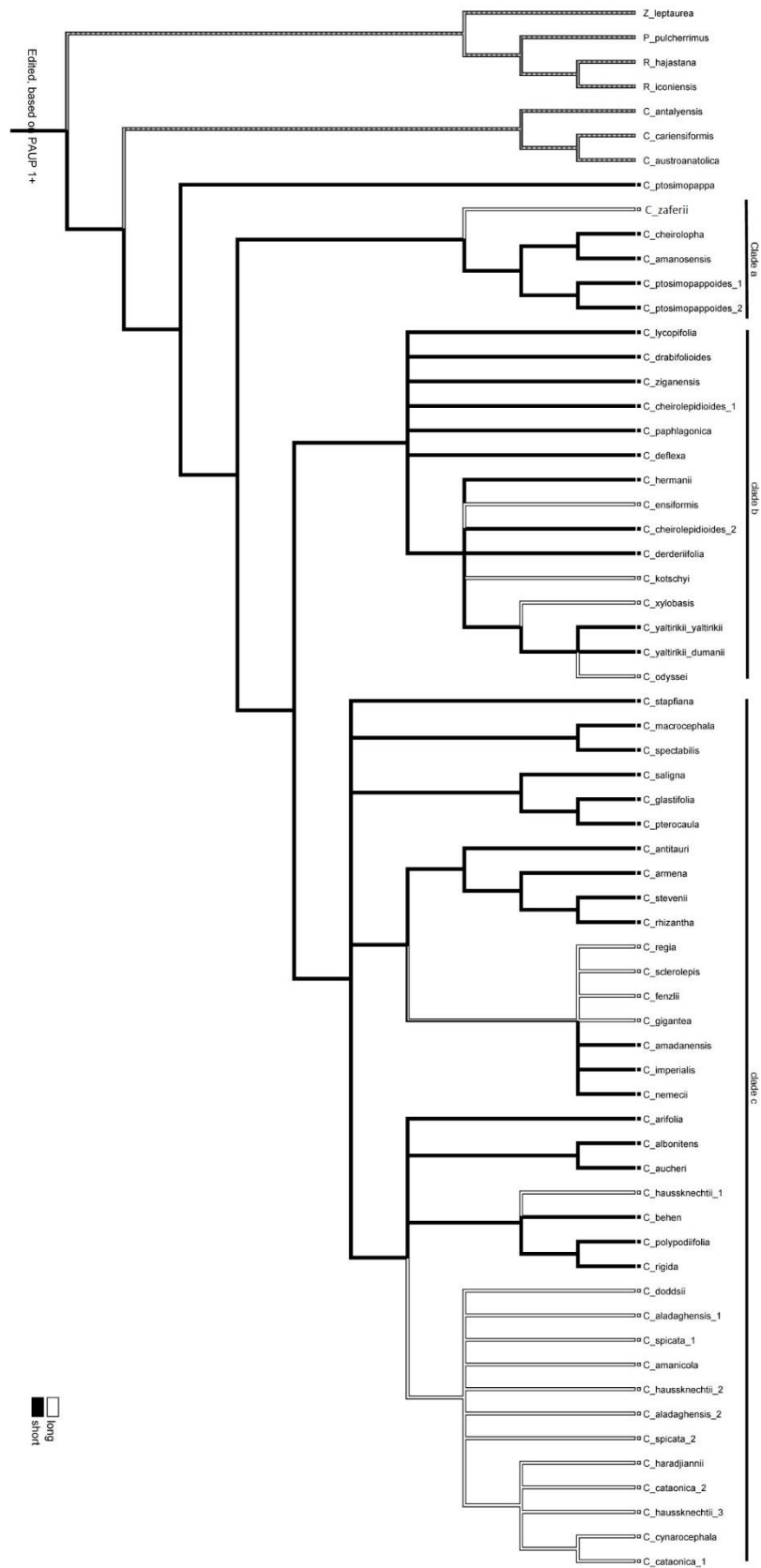
Supplement 1. Parsimony ancestral character reconstruction: Consistency Index is 0.125 for capitula size.



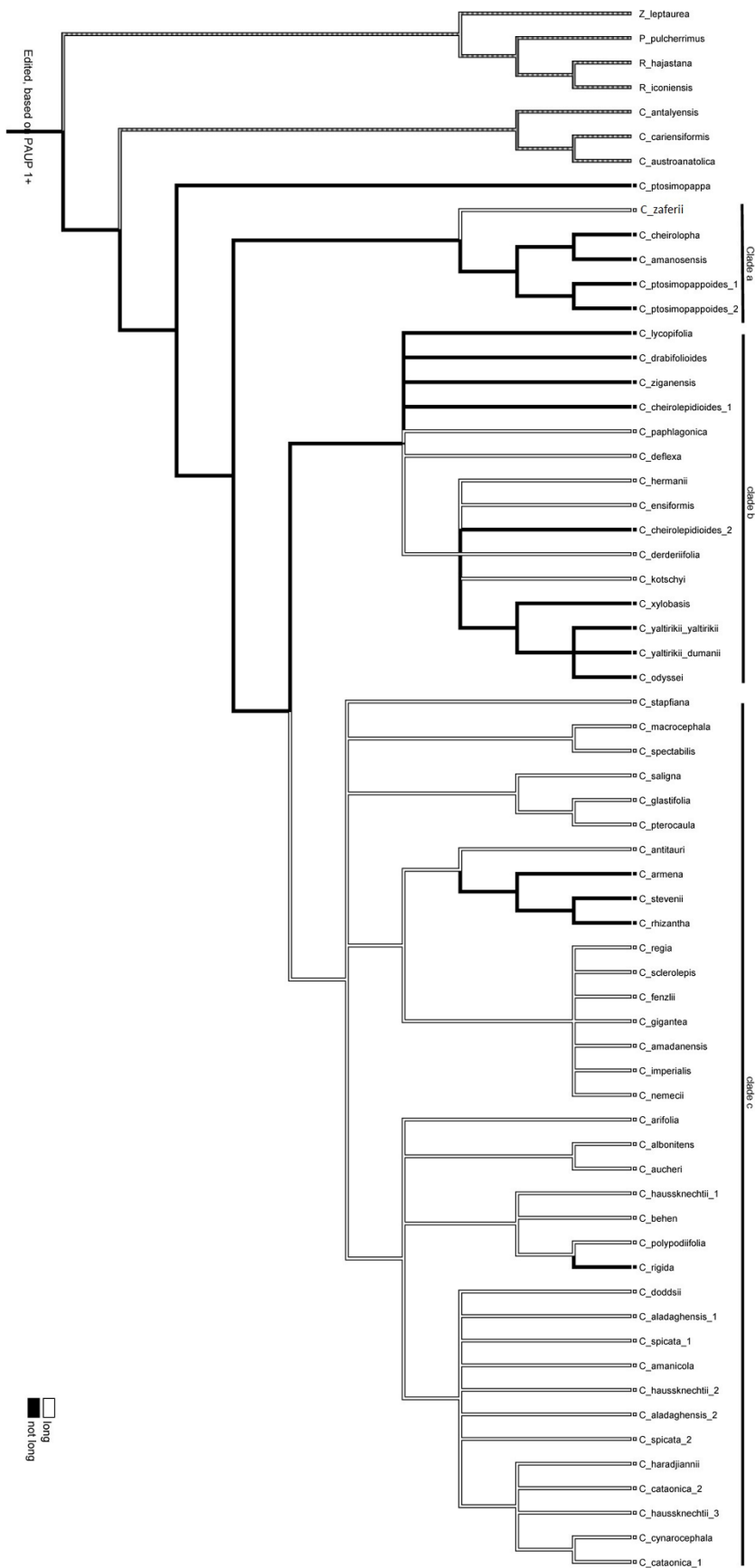
Supplement 2. Parsimony ancestral character reconstruction: Consistency Index is 0.2 for flower colour.



Supplement 3. Parsimony ancestral character reconstruction: Consistency Index is 0.06 for appendage broad.



Supplement 4. Parsimony ancestral character reconstruction: Consistency Index is 0.09 for spine length.



Supplement 5. Parsimony ancestral character reconstruction: Consistency Index is 0.11 for pappus length.